



City of
Burnsville

100 Civic Center Parkway, Burnsville, MN 55337

Phone: 952-895-4400

Fax: 952-895-4404

www.burnsvillemn.gov

FOR IMMEDIATE RELEASE

April 11, 2019

Contact:

Linnea Wier

Natural Resources

952-895-4518

VOLUNTEERS NEEDED FOR BURNSVILLE WETLAND EVALUATION TEAM

Volunteers eager to pull on a pair of waders and jump into monitoring the health of local wetlands are needed for Burnsville's Wetland Health Evaluation Program (WHEP).

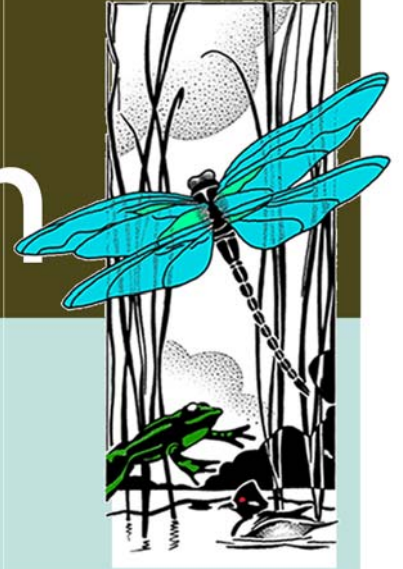
Throughout the summer of 2019, volunteers will gain hands-on experience in water quality, wetlands and plant/insect identification alongside other volunteers on the Burnsville team. The data the WHEP teams gather is used to inform local decision-makers and raise awareness in the community.

The average total time commitment for volunteers is between 10 and 30 hours from June through August. No experience is necessary; all volunteers will receive training, equipment and will be guided by an experienced team leader.

Application deadline is Wednesday, May 15. Learn more or register at www.mnwhep.org or call the Dakota County Water Resources Department at 952-891-7000.

(Flyer Below)

Join Burnsville's WHEP Team



The Wetland Health Evaluation Program (WHEP) engages citizen volunteers to help monitor wetlands in their community. Are you interested in wetlands, nature or water quality? If yes, then WHEP is for you!



What will you do in WHEP?

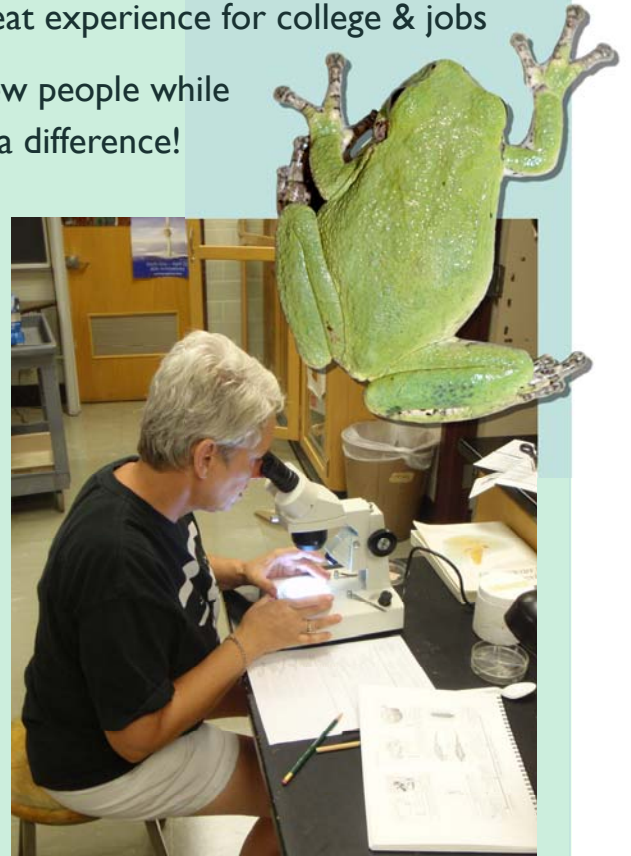
- ◆ Explore Burnsville wetlands
- ◆ Identify wetland plants & insects
- ◆ Gain great experience for college & jobs
- ◆ Meet new people while making a difference!

No experience needed! All training & equipment are provided. The program runs June & July, and you may volunteer as little or as much as you want.



TO LEARN MORE:

Paula Liepold, WHEP coordinator
Paula.Liepold@co.dakota.mn.us
(952) 891-7000
www.MNWHEP.org



Volunteer for:
**Wetland Health
Evaluation Program**
Contact: Paula Liepold
(952) 891-7000
www.MNWHEP.org

Volunteer for:
**Wetland Health
Evaluation Program**
Contact: Paula Liepold
(952) 891-7000
www.MNWHEP.org

Volunteer for:
**Wetland Health
Evaluation Program**
Contact: Paula Liepold
(952) 891-7000
www.MNWHEP.org

Volunteer for:
**Wetland Health
Evaluation Program**
Contact: Paula Liepold
(952) 891-7000
www.MNWHEP.org

Volunteer for:
**Wetland Health
Evaluation Program**
Contact: Paula Liepold
(952) 891-7000
www.MNWHEP.org